

# Short overview of EPISTOP

Long-term, prospective study evaluating clinical and molecular biomarkers of epileptogenesis in a genetic model of epilepsy – Tuberous Sclerosis Complex

Prof. Sergiusz Józwiak

- [sergiusz.jozwiak@gmail.com](mailto:sergiusz.jozwiak@gmail.com)



# Who is EPISTOP?



- 5 laboratories from Europe and the U.S.



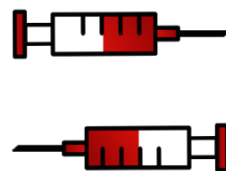
- Engages 10 clinical sites from Europe and Australia, collaborators



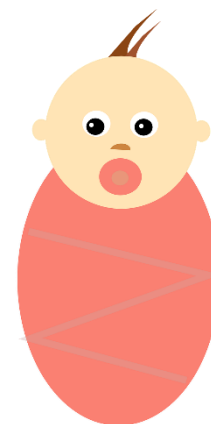
# Aims of the Project



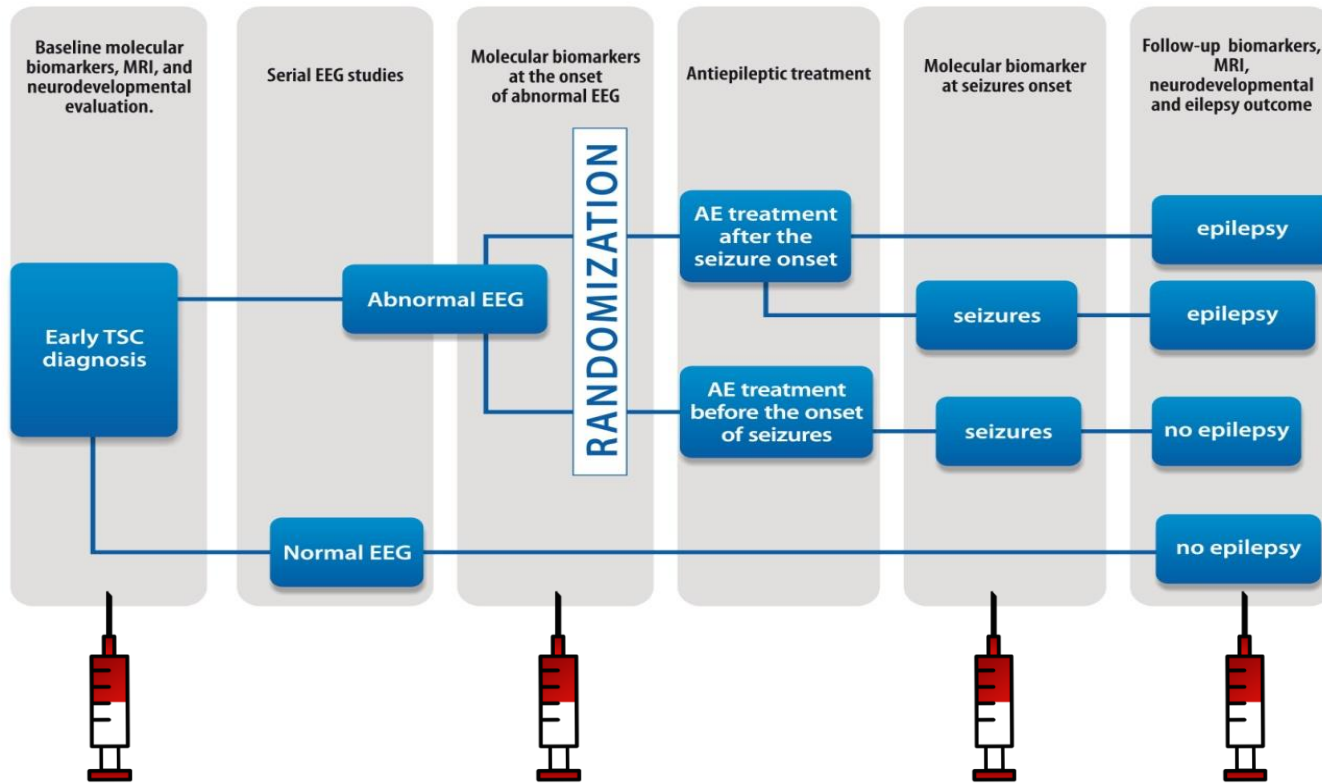
1. To prove that early treatment of subclinical seizures significantly reduces drug-resistancy and neurodevelopmental delay in children
2. Prospective analysis of clinical and molecular biomarkers (genes and proteins expression) in the course of epileptogenesis



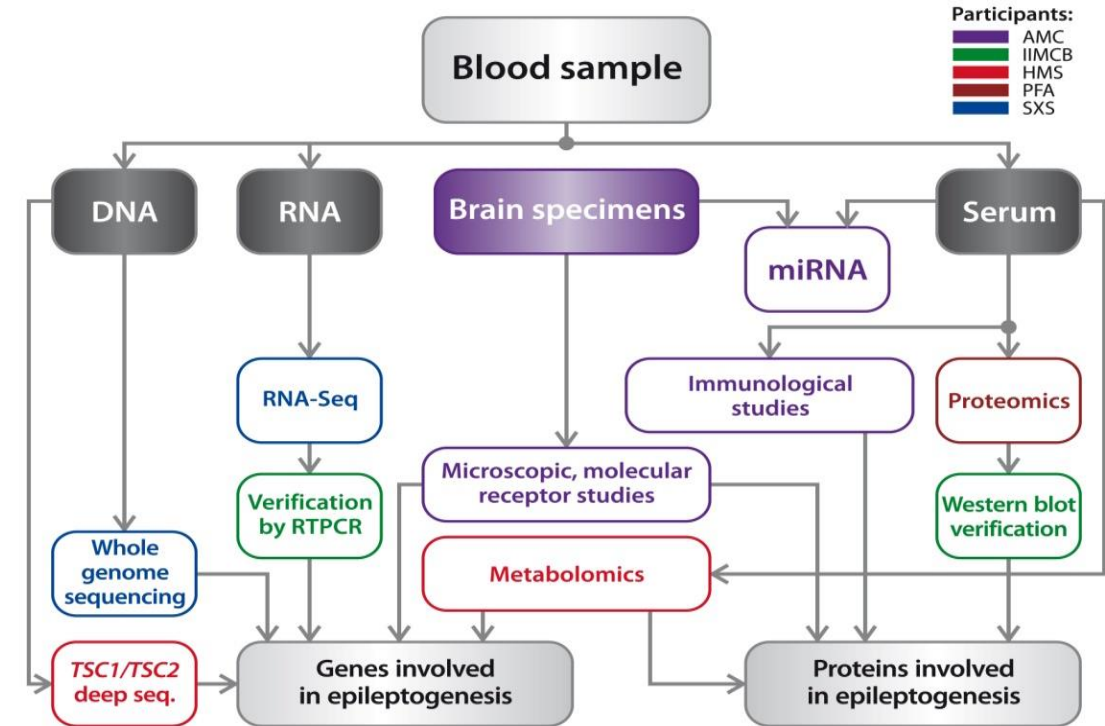
- We recruited to the project 101 newborns and infants up to the age of 4 months with diagnosed TSC (who had not developed epilepsy)



# What is EPISTOP? Why for epilepsy?



## Interactions between WP3 and WP5



# Structure of the EPISTOP project



## 8 Work Packages

- WP 1  
Management



- WP 2 EEG



- WP 3 Molecular  
Biomarkers



- WP 4 MRI



- WP 5 Brain  
samples



- WP 6  
Clinical  
study



- WP 7  
Neuro-  
develop-  
ment



- WP 8 Disse-  
mination

